



Engineered to Order  
Built to Last

# G&W Distribution Voltage Terminations

Visit [www.gwelec.com](http://www.gwelec.com) for more detailed information



## PORCELAIN SLIP-ON® TERMINATIONS

Slip-on terminations provide factory pre-assembled components including stress control and insulating dielectric permitting fast and easy installation in the field.

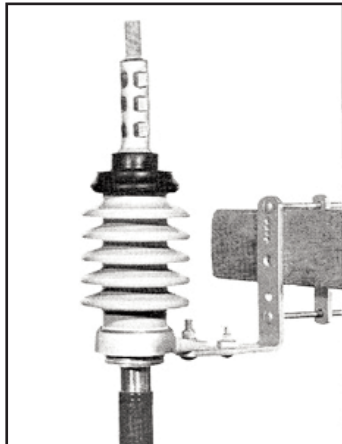
### Cable Types:

- 1) Extruded dielectric, concentric neutral, jacketed or unjacketed.
- 2) Extruded dielectric, shielded, jacketed including Unishield®, wire and tape shielded.

- 3) Extruded dielectric shielded, lead jacketed.
- 4) PILC / varnished cambric, lead jacketed.

### Electrical Ratings:

Max. Voltage: ..... 15-46kV  
BIL Impulse: ..... 110-250kV  
Continuous: ..... Same as cable  
Cable Range: ..... #4AWG-1500KCM  
(25-750 mm<sup>2</sup>)



## PORCELAIN EASY-ON II TERMINATIONS

Easy-On II terminations combine the time proven reliability of porcelain insulation with the installation ease of factory pre-assembled components. The terminations utilize a patented spring loaded elastomer system to produce a strong dielectric interface along the cable and the porcelain bore.

### Cable Types:

- 1) Extruded dielectric, concentric neutral, jacketed or unjacketed.

- 2) Extruded dielectric, shielded, jacketed including Unishield®, wire and tape shielded.

### Electrical Ratings:

Max. Voltage: ..... 15-34.5kV  
BIL Impulse: ..... 110-200kV  
Continuous: ..... Same as cable  
Cable Range: ..... #6AWG -1000KCM  
(16-500 mm<sup>2</sup>)



## PORCELAIN PSC TERMINATIONS

PSC terminations provide maximum resistance to environmental moisture and pollution with the reliability of a porcelain insulator and a brass top cap. The terminations utilize a patented spring loaded elastomer system to produce a strong dielectric interface along the cable and the porcelain bore.

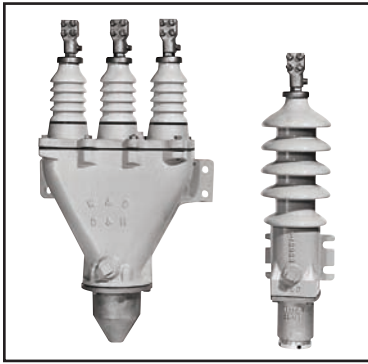
### Cable Types:

- 1) Extruded dielectric, concentric neutral, jacketed or unjacketed.

- 2) Extruded dielectric, shielded, jacketed including Unishield®, wire and tape shielded.

### Electrical Ratings:

Max. Voltage: ..... 15-46kV  
BIL Impulse: ..... 110-250kV  
Continuous: ..... Same as cable  
Cable Range: ..... #6AWG -2000KCM  
(16-1000 mm<sup>2</sup>)



## PORCELAIN CAPNUT TERMINATIONS

Capnut terminations provide bolted, gasketed, interchangeable components for maximum installation flexibility.

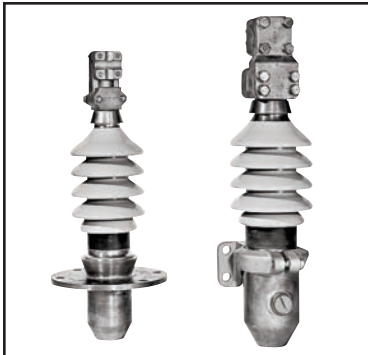
### Cable Types:

- 1) Extruded dielectric, concentric neutral, jacketed or unjacketed.
- 2) Extruded dielectric, shielded, jacketed including Unishield<sup>®</sup>, wire and tape shielded.
- 3) Extruded dielectric, shielded, lead jacketed.

- 4) PILC / varnished cambric, lead jacketed.

### Electrical Ratings:

Max. Voltage: 1/C .....15-46kV  
 3/C .....15-34.5kV  
 BIL Impulse: .....110-250kV  
 Continuous: .....Same as cable  
 Cable Range: 1/C: . #6AWG-2500KCM  
 (16-1250 mm<sup>2</sup>)  
 3/C: . #6AWG-1000KCM  
 (16-500 mm<sup>2</sup>)



## PORCELAIN SODERTITE TERMINATIONS

Sodertite terminations provide special metal-to-porcelain soldered joints and a deep draw porcelain contour for maximum electrical and mechanical performance.

### Cable Types:

- 1) Extruded dielectric, URD and shielded, plastic or lead jacketed.
- 2) PILC / varnished cambric, lead jacketed.
- 3) Low pressure gas or fluid filled.

### Electrical Ratings:

Max. Voltage: 1/C .....15-46kV  
 3/C .....15-34.5kV  
 BIL Impulse: .....110-250kV  
 Continuous: .....Same as cable  
 Cable Range: 1/C: . #6AWG-2500KCM  
 (16-1250 mm<sup>2</sup>)  
 3/C: . #6AWG-1000KCM  
 (16-500 mm<sup>2</sup>)

*Crimp type design available.*